

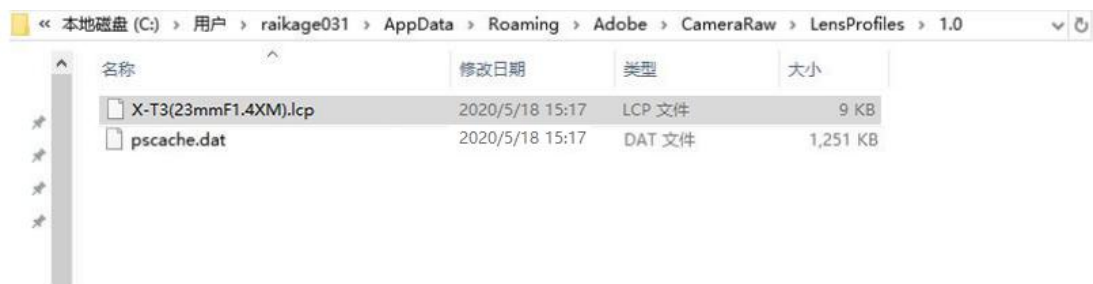
## Instructions of Viltrox Lens Profiles (PS、Lr)

Put the lcp file in the following path:

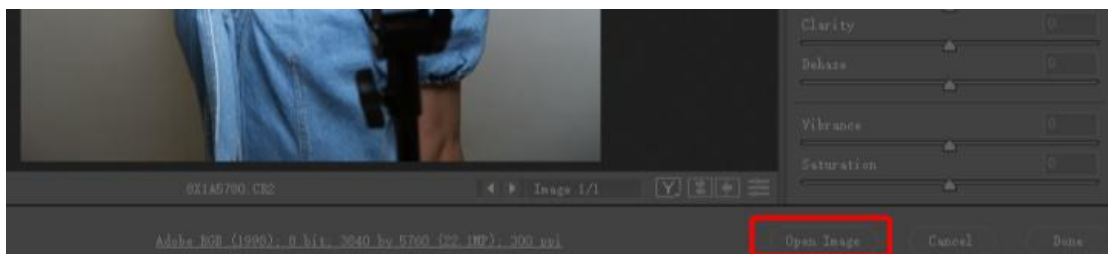
(Mac OSX) : /Users/(User Name)/Library/Application Support/Adobe/Camera Raw/LensProfiles/1.0

(Windows7/8/10) : C:\User\ (UserName) \AppData\Roaming\Adobe\CameraRaw\LensProfiles\1.0

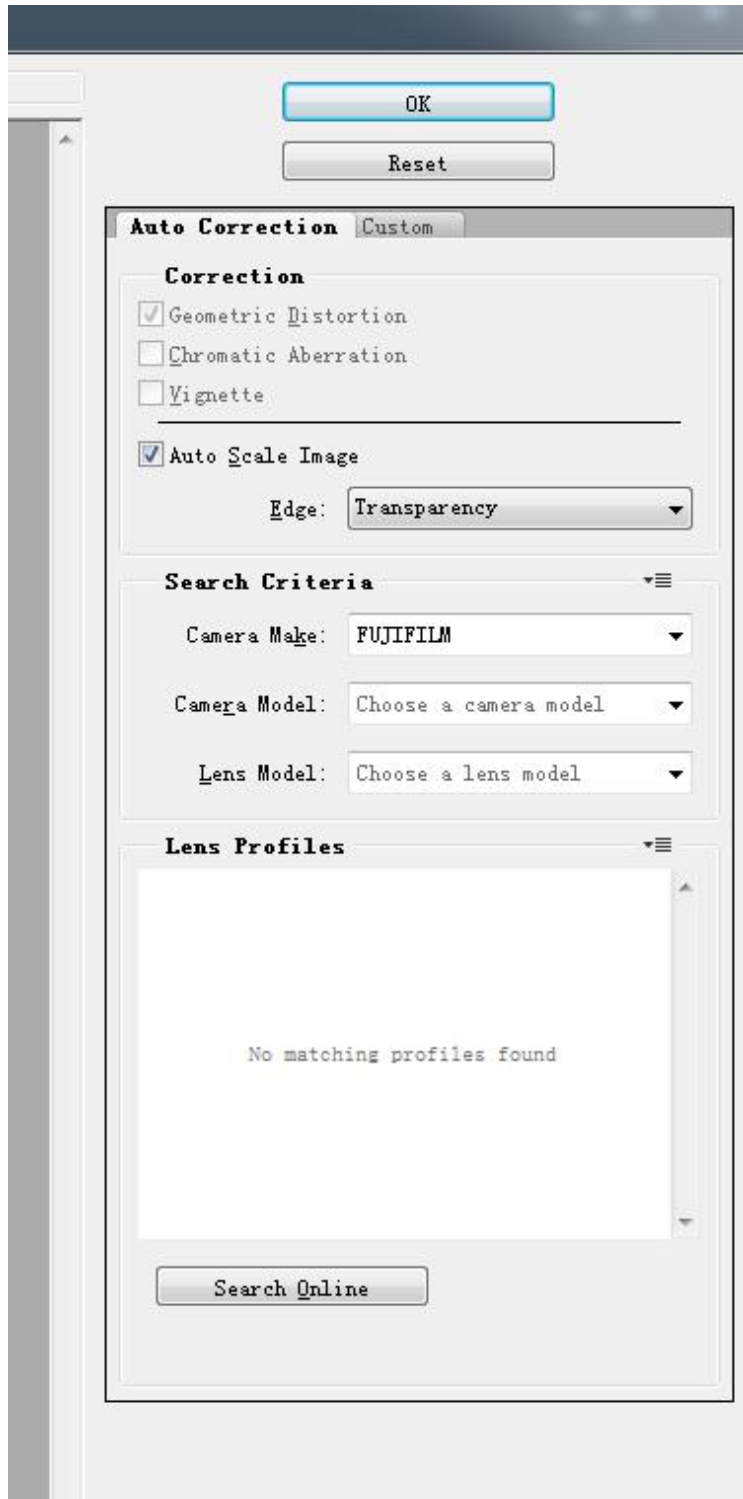
(**AppData** is a hidden folder, click **【View】** in the menu, and then tick **【Hidden Item】** )



Open the image that needs to be modified on **PS**. If the image format is **RAW**, import into **PS**, and directly open the image in the pop-up **CameraRaw**

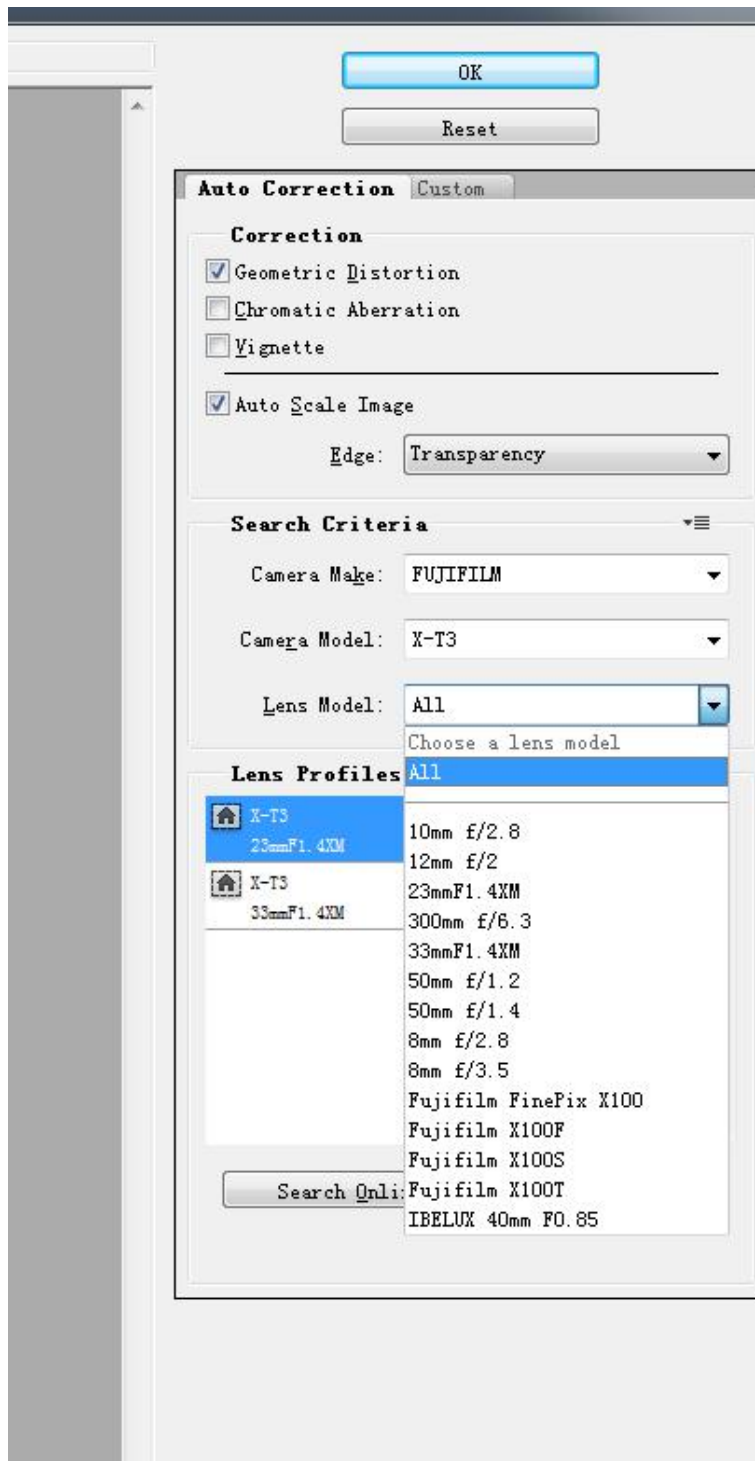


Back to the main PS interface, select Filter-Lens Corrections



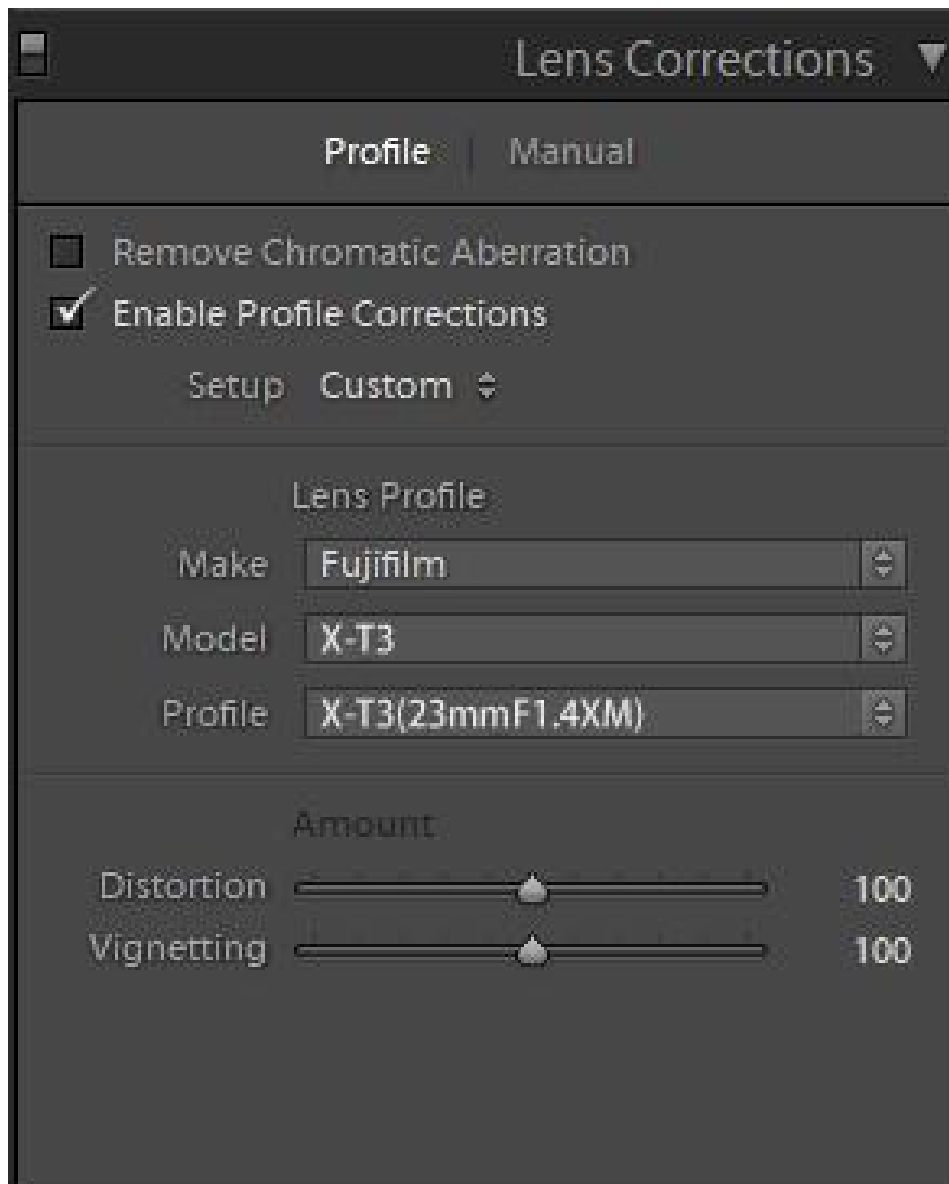
Choose the camera manufacturer , the lens profiles will automatically appear, and you can select the option that needs to be corrected.

If the imported picture format is JPG, first import the picture into PS, and get to the Filter-Lens Corrections directly. Select the camera manufacturer, you can start the lens correction.

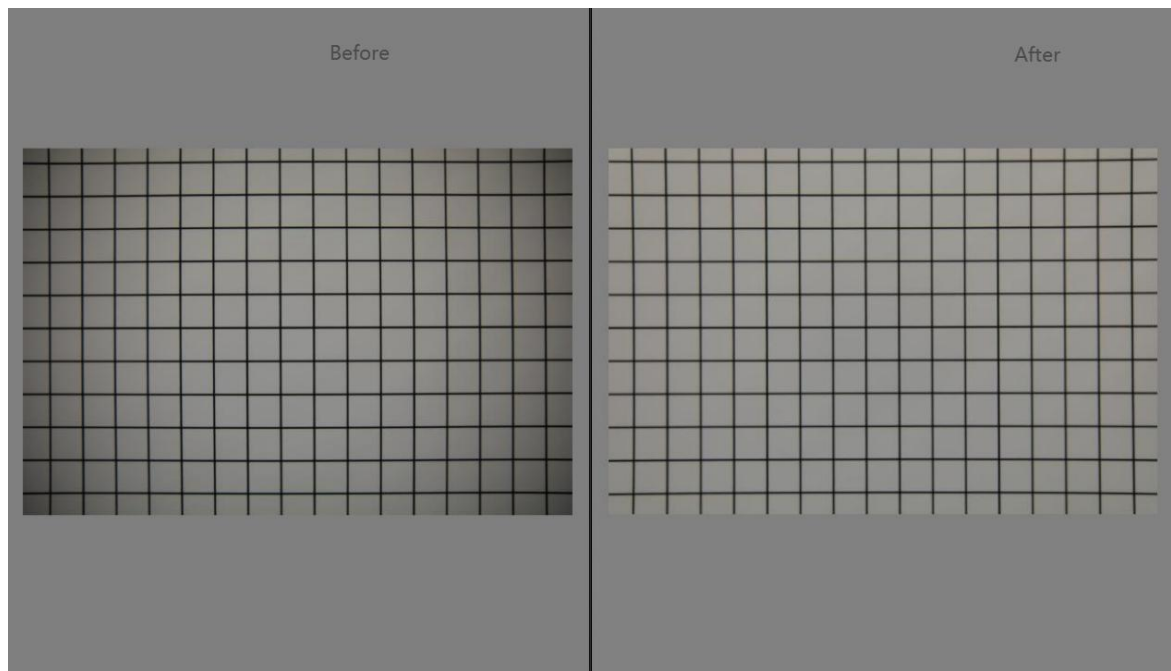


If you need to import it into Lightroom for lens corrections,

the image format must be **JPG**. First,import the picture into **LR**, select lens corrections in the modified photo, The cameras will automatically recognize the Lens Profiles.



This is a comparison chart before and after correction.



### **\* Remarks**

- ①The lcp file only needs to be placed in the a directory, both Photoshop and Lightroom can recognize it
- ②PS can correct RAW and JPG image files while LR can only correct JPG image files
- ③Some models may not recognize the Lens Profiles
- ④Lens Profiles correction is only applicable to images taken with the largest aperture. Photos taken with a smaller aperture need to fix the vignetting by themselves.